

CELEBRATE
MASS DAILY
WHEN A PRIEST
TRAVELS

IN THE FOOTSTEPS OF PADRE PIO *and the Saints of Italy*

OCTOBER 8 - 17, 2025



ITINERARY



October 8 – Depart the USA

October 9 – Rome / Greccio / Assisi

Arrive in Rome. En route to Assisi, stop in Greccio to visit the sanctuary. Set within the rock like an eagle's nest, the Hermitage of Greccio Sanctuary is an extraordinary fusion of architecture and nature. The sanctuary is famous because Saint Francis of Assisi chose it as the backdrop for one of the highest moments in his life: the creation of the Creche on Christmas Eve, 1223. (D)

October 10 – Assisi

Today, you will visit the lower city. Visit the church and convent of St. Damiano where, in 1205, Saint Francis received his calling to "Rebuild My Church". Saint Clare later led her Order of the Poor Ladies from here until her death in 1253. The Basilica of St. Mary of the Angels stands at the foot of the hill of Assisi and houses the Porziuncola, Saint Francis' Church given to him by the Benedictine monks. You'll travel to and celebrate Mass at the Papal Basilica of St. Francis, the mother church of the Franciscan Order and burial place of St. Francis. This basilica, which was begun in 1228, is built on the side of a hill and comprises an upper and lower church. These are decorated with numerous frescoes by late medieval painters, including Giotto. Continue your guided pilgrimage of the town's highlights featuring the Basilica of St. Clare, where you can kneel before the famous crucifix from which Jesus spoke to St. Francis. (B, D)

October 11 – Assisi / Lanciano / San Giovanni Rotondo

After breakfast, they journey to Lanciano where a priest was doubtful about the Real Presence. During his celebration of Mass, the host turned to flesh and the wine into blood. Visit the shrine of the Eucharistic Miracle. Travel the rest of the way to San Giovanni Rotondo. Check into your hotel for dinner and your overnight stay. (B, D)

October 12 – San Giovanni Rotondo / Padre Pio / Mount St. Angelo

Visit the Padre Pio Pilgrimage Church, erected in 2004, and walk the Way of the Cross on the forested hillside nearby. Visit the Sanctuary of Saint Mary our Lady of Grace to visit St. Padre Pio's crypt. This afternoon, we will have an optional pilgrimage to Mount St. Angelo. The Sanctuary of Mount St. Angelo was built in the 13th century by Charles of Anjou. The archangel Michael appeared here in 490, 492, and 1656, consecrating the shrine and sacred cave. You'll have time for reflection and prayer before returning to your hotel for dinner and your overnight stay. (B, D)



October 13 – San Giovanni Rotondo / Pietralcina / Montecassino / Nettuno

Bid farewell to San Giovanni Rotondo and travel to Pietralcina. Visit the house where St. Padre Pio grew up and the chapel where he received the stigmata on September 7, 1910. Continue to Montecassino and visit the Benedictine abbey where St. Benedict and his sister, Scholastica, are buried. Finish the day in Nettuno and check into your hotel for dinner and your overnight stay. (B, D)

October 14 – Nettuno / Rome

After breakfast, say goodbye to Nettuno and travel to the eternal city, Rome. History is woven through the streets and neighborhoods of Rome as in no other city. Upon arrival, stop at the Shrine of Our Lady of Divine Love. Here, a pilgrim pursued by dogs appealed to Our Lady and she intervened for his safety. Pilgrims began to frequent the site and a chapel was built here in 1745. (B, D)

October 15 – Rome

This morning, we will make our way to St. Peter's Square to attend the Papal Audience, led by His Holiness, Pope Francis. (Papal Audience: This is scheduled to take place every Wednesday, pending the schedule of Pope Francis). Following the audience, you will experience the glory of Christian Rome when you visit the Vatican, home to one of the greatest museums in the world. And, of course, you'll enter St. Peter's Basilica and the Sistine Chapel, where you'll view Michelangelo's frescoes, which have been restored to their full, colorful glory. (B, D)



October 16 – Rome

After breakfast, begin your day with a visit to the Archbasilica of Saint John Lateran; six popes are entombed here. View the extraordinary collection of relics at the Basilica of the Holy Cross, as well as a full-size replica of the Shroud of Turin, next to the Basilica of Saint Paul Outside the Walls. The present structure stands over the place where Constantine built the first church, which is Saint Paul's grave. The church features a portrait of every pope who has served the church, with the face of Pope Francis I illuminated as the present pontiff. San Sebastian Outside the Walls is another magnificent church built over the Catacombs of Saint Sebastian. The remains of Peter and Paul were temporarily protected here during the Valerian Persecution of 258. Step beneath the surface into the Catacombs of Callixtus, built along the Appian Way. Here, 16 popes from the 2nd through 4th centuries were interred, though they have been removed to various churches over the centuries. Continue to the Basilica of Saint Mary Major (Maria Maggiore). This is the largest Marian church in Rome. Its construction began after the Council of Ephesus, in the year 431, proclaimed that Mary was the Mother of God." (B, D)

October 17 – Return to the USA

Starting at

\$4,598* From New York

YOUR ALL-INCLUSIVE PRICE INCLUDES:

Basic Tour & Guided Sightseeing, Round-trip International Airfare

Additional baggage & optional fees may apply; see fine print for details

Fuel Surcharges and Government Taxes

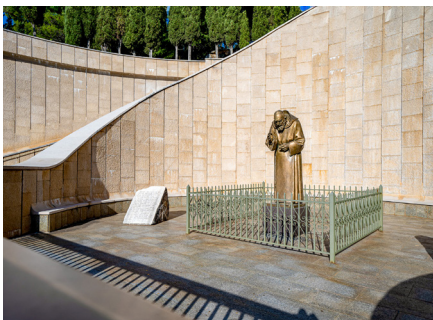
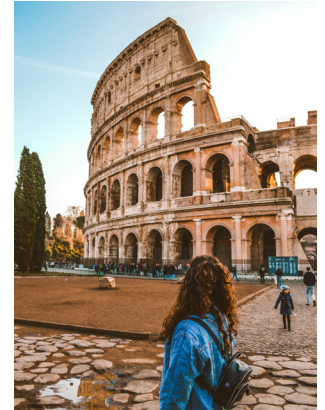
Subject to change

Admin. Fees, Entrance Fees, Hotel Gratuities & Program Fees

Meals as listed in the Itinerary, Deluxe Motorcoaches

First-Class Hotels & much more!

*See back for pricing details



TRAVEL REGISTRATION FORM

Please mail completed form with payment and passport copy to:

PROGRAM CONDITIONS

INCLUDED IN PRICE:

Round-trip international airfare • Deluxe motorcoaches • 1st class hotels • Guided sightseeing • Entrance fees to sites visited (as listed in itinerary) • Meals as listed in the itinerary • Hotel gratuities • Program fees • Administrative Fee • Fuel surcharges • Government Taxes \$98 (Increases in government tax and fees are subject to change)

NOT INCLUDED IN PRICE:

Optional sightseeing as listed in the brochure • Miscellaneous fees i.e. individual transfers; passports, laundry, lunches, beverages & baggage fees • Visas for non-US citizens • Visas and Transfers for all ground only passengers • Optional Travel Protection Program (see premium schedule) • Tips for guide (\$6/day) & driver (\$3/day) • Required vaccinations - Required medical testing before, during, and/or after travel.

ACCOMMODATIONS:

Price is per person based on double occupancy. When available, single rooms are often smaller than doubles. While we will try to match roommates, we cannot guarantee a roommate will be available. Roommates may be assigned as late as 30 days prior to departure and, if one is not available or you request a single room, the following charges apply: \$650 during the basic tour.

PAYMENT SCHEDULE:

Table with 3 columns: Deposit, Payment Amount, Due Date. Rows include Registration Deposit (\$300), Final Payment (Full payment), and Travel Protection Premium Amount.

REGISTRATIONS RECEIVED after June 25, 2024:

We welcome registrations after 06/25/25. Registrations received between 06/26/25-07/10/25 will incur a \$100 per person fee. Registrations received between 07/11/25-07/25/25 will incur a \$200 per person fee. Registrations received after 07/26/25 will incur an additional fee based on air availability. Additional fees will be advised upon registration.

CANCELLATION FEES:

100% of Cancellation Fees are covered by the optional Travel Protection Program, provided premium has been paid and reason for cancellation is coverable. Those who do not take travel protection should be aware of the following per-person cancellation penalties: From day of registration to 105 days prior to departure, you will be charged the \$100 non-refundable cancellation fee plus any airline fees. Additionally, thereafter, you will be charged any airline penalties and a single room supplement if your cancellation forces your roommate into a single plus the following per-person charges: 104-60 days = \$400; 59-45 days = \$600; 44-31 days = 40% of total cost; 30 days to day of departure = 100% of total cost. Submit cancellation in writing. On or after day of departure, there will be no refund for any services not used.

STATEMENTS OF RESPONSIBILITY

We do not accept responsibility for losses or additional expenses due to delay or changes in air schedules, hotel overbookings, other hotel related problems or causes, and/or travel supplier cancellations or postponements. Travel suppliers include all tour operators, cruise lines, airlines, hotels, bus companies, entertainment venues, and any other travel supplier used to operate the tour. All such losses or expenses will be the responsibility of the passenger. We reserve the right to make adjustments to the itinerary as deemed desirable by us, and we reserve the right to cancel any tour prior to departure. If a tour is canceled beyond the control of us, we will provide a refund or a future travel credit to be used two years from the date of issuance for the value of all funds paid by the passenger less nonrefundable travel supplier prepaid deposits, travel supplier change fees, nonrefundable travel protection premiums, and a \$150 administration fee.

FIT TO TRAVEL STATEMENT:

Passengers registering for the tour accept the responsibility for being in good health and able to walk and travel on the tour. Because many of the sites are not accessible to the physically challenged and space limitations on tour buses, wheelchairs and scooters cannot be accommodated. Those needing oxygen or other ambulatory assistance will find the tour extremely limiting in their experiences. Persons using C-pap machines requiring distilled water will need to inform us ahead of time, so we can work with local operators to prepare as it is not always available. We reserve the right to refuse or revoke travel to anyone who is, in our sole judgment, incapable of group travel without causing undue demands upon the staff or other tour participants. Accessible rooms/cabins are limited and subject to confirmation after receiving the passenger's written request. If you have questions, please contact us for more details.

PASSPORT INFORMATION:

Passport information must be submitted to our office no later than 06/25/25. Failure to provide your passport information to our office by this date may result in change fees or denial of travel. Discrepancies in information may result in change fees, delays in receiving travel documents for your trip, or denial of travel. Any fees incurred due to discrepancies are the responsibility of the passenger. Passports must be valid for at least 6 months after the return date.

PRICE INCREASES:

All prices quoted in this brochure are subject to change prior to payment in full due to currency fluctuations, fuel surcharge increases, government taxes and fees increases or unforeseen circumstances. In addition, you may be subject to a price increase after payment in full has been received due to potential government imposed taxes and fees.

AIRLINE ROUTES AND TICKETS:

In order to keep prices low, we do not guarantee the most direct routing to your final destination. Once issued, airline tickets cannot be changed or refunded thereafter. Air transportation to/from your destination will be economy class on IATA and ARC carriers utilizing APEX or SUPER APEX non-refundable, non-amendable tickets for groups of 10 or more flying together on entire itinerary. If you choose to depart from a different city than your group or traveling companion, or deviate your flight and/or trip plans, and/or you are taking a pre or post tour, you may fly on a different scheduled flight(s) than the rest of your group. If you make your own air arrangements, you are responsible for booking all needed flights for your travel unless specified otherwise. Contact your travel advisor for further details.

FLIGHT TIMES AND SEATING:

All flights are subject to change by the airlines without advance notice. We are not responsible for such changes or delays and do not reimburse expenses resulting from such delays. If you are making your own flight arrangements to the departure city, we recommend you purchase a ticket that can be exchanged without large penalties. There is no advance seat selection for groups on most airlines. Early check-in is necessary to secure seats with travel companions and those with special needs. Due to security measures taken at airports, it is advisable to arrive at the airport three hours prior to departure time. Seating is solely under the control of the airlines. You will receive your flight information 60-30 days prior to departure. Final documents are sent approximately 2-3 weeks prior to departure.

ADDITIONAL AIRLINE FEES:

You will likely incur additional airline checked baggage fees that are not included in the price of the tour. These fees vary by airline and are at the airline's discretion on each segment of the flight itinerary. You may also incur optional fees i.e. food, excess baggage, overweight baggage, items of personal nature, etc.

DEVIATIONS AND AIR UPGRADE REQUESTS:

Deviation and Air Upgrade requests must be submitted in writing and are subject to additional airline fees. Deviations and Air Upgrades are not always possible given the group schedule and time of ticketing. Passengers who are ticketed with air deviations and/or upgrades will likely not fly with the group and will therefore need to provide their own transfers.

ITINERARY CHANGES:

Every effort has been made to ensure the accuracy of this brochure. While we will make every effort to ensure you will see all sites listed in this brochure, the availability of sites, order of sites and/or days and number of days may be altered to accommodate changes in airline, hotel schedules, and local conditions. No changes to the itinerary are effective unless approved in writing and signed by an authorized officer of the tour operator. Except as stated herein, no other person is authorized to cancel, modify or vary the tour arrangements or to make any representation of warranty concerning the tour. Due to airline schedules, some participants may receive one or two extra leisure days at a nominal per day charge and some extensions may not be available on all departure dates. If itinerary changes necessitate extra overnights, you will be charged \$125 per night; single rooms \$175 per night. Meals for extra nights are not included.

VALIDITY DATE:

This brochure is valid until 10/29/24. Registrations will still be accepted after the validity date.

RELEASE INFORMATION:

Payment of deposit indicates permission for us or our agents to record the registrant's participation and appearance on video tape, audio tape, film, photograph, or any other medium and to use the registrant's name, likeness, voice, comments, submitted documentation, written papers, and/or biographical material without restrictions or limitation for any advertising, marketing, publicity, educational or promotional purpose which we or our agents deem appropriate, unless the registrant or guardian otherwise notifies us in writing prior to departure.

Enrollment in, payment of deposit and/or acceptance of final documents, vouchers, or tickets shall be deemed to be consent to the Passenger Agreement and Program Conditions of the brochure. Prices are based on tariffs in effect as of January 1 of the previous year and are subject to adjustment without notice in the event of any change or currency fluctuation.

Except where otherwise stated, we act only as agent for the relevant supplier in securing hotels, transportation and other travel services and in no event shall we be liable for failure by any such supplier to render any transportation, lodging or other travel service to be provided on the tour. The passenger agrees that we assume no liability for injury, death, damage, loss, theft, accident, delay, any lost or damaged luggage, or irregularity which may occur by reason of any negligent or willful act or omission of any suppliers of services.

We do not own or operate any of the suppliers of services to your tour. Similarly without limiting the foregoing, passenger agrees to hold us harmless for any defect in any vehicle, plane, boat, bus, car, van or other vehicle, act of war or insurrection, terrorist activity, revolt or other civil uprising, military action, strikes or labor unrest or any Act of God or for any other act of any third party.

Departure City: _____ Departure Date: 10/08/25 (P)

First, Middle & Last Name must be submitted as it appears on your passport:

Guest 1: First Name: _____ (Name Tag: _____)

Middle Name: _____ Last Name: _____ Title: _____

Street Address: _____ P.O. Box: _____

City: _____ State: _____ Zip Code: _____

Phone: _____ Alt. Phone: _____

Email: _____

Birth Date: ____/____/____ State of Birth: _____ Sex: M F

Dietary Restrictions: _____

Emergency Contact: _____ Phone: _____

How did you learn about this tour? _____

Guest 2: First Name: _____ (Name Tag: _____)

Middle Name: _____ Last Name: _____ Title: _____

Street Address: _____ P.O. Box: _____

City: _____ State: _____ Zip Code: _____

Phone: _____ Alt. Phone: _____

Email: _____

Birth Date: ____/____/____ State of Birth: _____ Sex: M F

Dietary Restrictions: _____

Emergency Contact: _____ Phone: _____

How did you learn about this tour? _____

Roommate(s): _____

If No Roommate: Try to Match Me Single Room (availability limited - \$650)

Important Information Regarding Travel Protection Plan:

- 1 Travel Protection coverage cannot be added after you have paid in full.
2 Premium is based on TOTAL cost of trip and is non-refundable.
3 Coverage begins when your premium payment is received (separate from deposit & clearly designated as your travel protection premium).
4 Premium must be paid in full no later than 06/25/25.

Guest 1:

I Accept I Decline

Guest 2:

I Accept I Decline

\$300 DEPOSIT PER PERSON REQUIRED WITH REGISTRATION
FINAL PAYMENT DUE 06/25/25

via check # _____ via credit card (circle): VISA MASTERCARD DISCOVER AMEX

Card Number: _____ Exp. Date: ____/____

Name on Card: _____ CVN: _____

PASSENGER AGREEMENT

By signing and submitting the registration form, I/we certify that I/we have read Passenger Agreement, Program Conditions, and Statements of Responsibility of the brochure, understand its content, and agree to its terms including but not limited to the potential for price increases that may apply before payment in full has been received as set forth in the Program Conditions and Statements of Responsibility of the brochure and potential price increases after payment in full has been received due to government imposed taxes and fees.

Guest 1 Signature: _____

Guest 2 Signature: _____

Tour: XI25 Date: 100825 Code: P ID: _____ V.001 04/29/24

Travel Protection Plan - Premium Rates

For a full description of the plan, go to: www.tripmate.com/wpF427E

Table with 8 columns: Trip Cost, Plan Cost, Trip Cost, Plan Cost, Trip Cost, Plan Cost, Trip Cost, Plan Cost. Rows show premium rates for various trip cost ranges.

Schedule of Coverages Maximum Benefit

Table with 2 columns: Schedule of Coverages, Maximum Benefit. Rows include Trip Cancellation, Trip Interruption, Missed Connection, Travel Delay, Medical Expense / Emergency Evacuation, Accidental Death & Dismemberment, Baggage and Personal Effects, Baggage Delay.

Additional Cancellation Protection

When you purchase this Travel Protection Plan at or before the final payment due date for Your Trip, you also receive the Educational Travel Services Pre-Departure Cancellation Waiver Benefit that allows you to cancel your Educational Travel Services travel arrangements up to the day of departure for any reason (excludes no shows and those not permitted boarding). With this Educational Travel Services Cancellation Waiver, your non-refundable land cancellation penalties will be refunded in Educational Travel Services travel certificates. Certain travel programs are not eligible for this benefit, such as cruise and land programs listed and detailed on the Educational Travel Services website (www.etstours.com). Premiums must be paid in addition to initial or second deposit prior to the final payment for coverage to be in effect.

Part A - Travel Arrangement Benefits are provided by Educational Travel Services. Part B - Travel Protection Benefits are provided by United States Fire Insurance Co. *For New York Residents Only: Part A Benefits are travel arrangement benefits underwritten by United States Fire Insurance Company.

Conditions and Limitations

This is a brief description of the plan available for all Travel Protection sales for Trips departing January 1, 2013 and after. Certain exclusions and limitations apply and are detailed in the Certificate of Coverage. For example, coverage does not apply to: any Sickness or condition of you, a Traveling Companion or a Family Member traveling with you that existed during the 60 days prior to the effective date of the coverages (The Pre-Existing Condition Exclusion is waived if payment for this plan is received by Educational Travel Services at or before the final payment due date for Your Trip or 105 days before departure date, whichever occurs first), suicide, normal pregnancy, war or any act of war. Other Covered Reasons, as defined, includes the following events or their consequences: Cancellation or interruption of your Trip due to: Inclement Weather, unannounced Strike, mechanical breakdown that causes complete cessation of services of Your Common Carrier for at least 12 consecutive hours; a documented traffic accident while en route to departure; being hijacked or quarantined; jury duty; destruction of your home or destination by fire, flood, burglary or natural disaster; being called to the emergency service of government to provide aid or relief in the event of a natural disaster; a documented theft of passports or visas; a transfer of employment of 250 miles or more; or Revocation of military leave. For further information ask for the Certificate of Coverage which fully details the coverages, provisions, limitations and exclusions of the plan offered and is available to you, upon request, at any time prior to your purchase of the plan. The Travel Protection Plan is only available for citizens or residents of the United States of America. This plan is underwritten by: United States Fire Insurance Company, Eatonville, NJ. Benefits are administered by: Trip Mate, Inc., 9225 Ward Parkway, Suite 200, Kansas City, MO, 64114, 1-800-898-7222 (in CA, dia Trip Mate Insurance Agency).